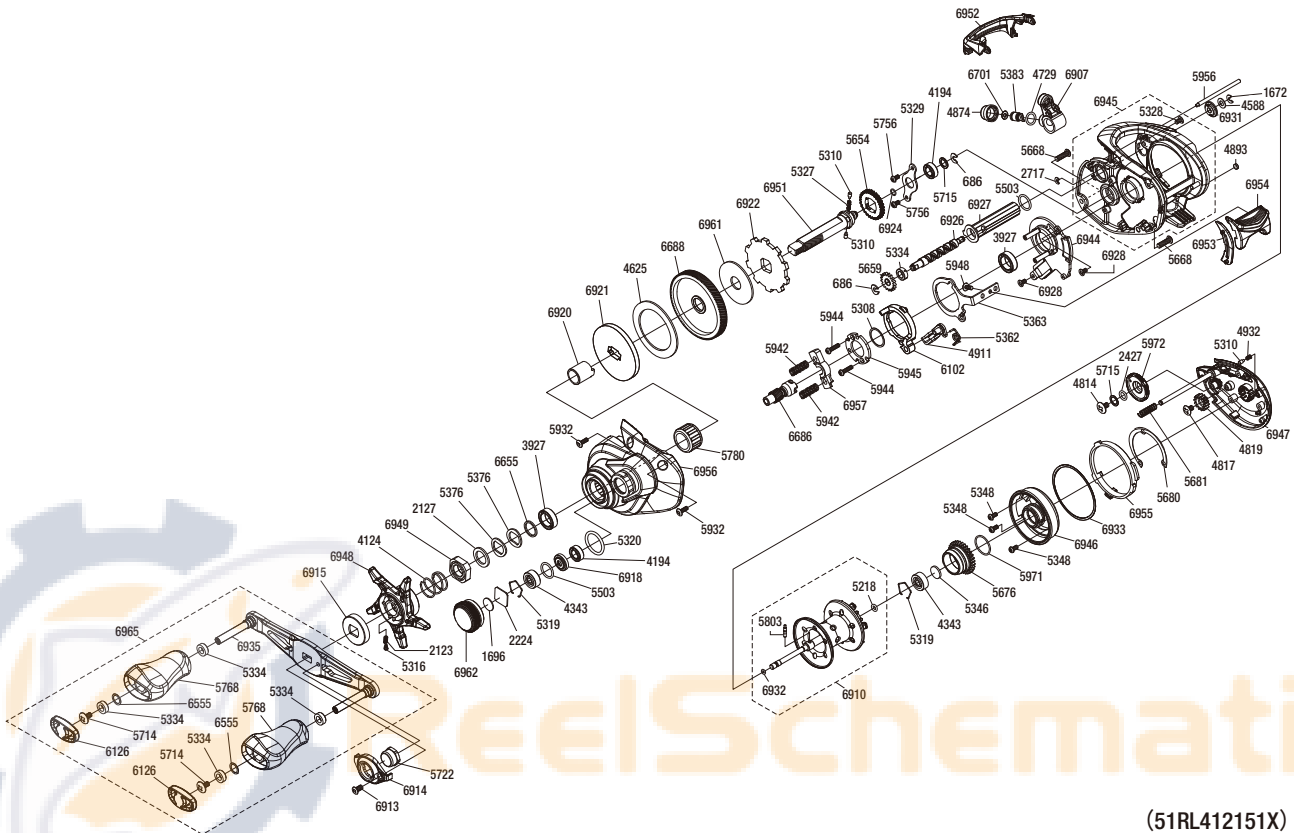


# SHIMANO

## CURADO MGL

## CUMGL151HG



(51RL412151X)

Please note that the number of adjusting washers may not be the same as shown in the exploded views. (Adjustment will vary with each individual product.)

Part No.	Description	Part No.	Description	Part No.	Description
BNT0686	E Lock	BNT5362	Clutch Pawl Spring	BNT6910	Spool Assembly
BNT1672	E Lock	BNT5363	Clutch Plate	BNT6913	Screw
BNT1696	Cast Control Spacer (B)	BNT5376	Washer	BNT6914	Handle Nut Plate
BNT2123	Click Spring	BNT5383	Line Guide Pawl	BNT6915	Star Drag Click Plate
BNT2127	Star Drag Spacer	BNT5503	O Ring	BNT6918	Bearing Spacer
BNT2224	Cast Control Spacer (A)	BNT5654	Idle Gear A	BNT6920	Roller Clutch Inner Tube
BNT2427	O Ring	BNT5659	Idle Gear C	BNT6921	Key Washer
BNT2717	E Lock	BNT5668	Screw	BNT6922	Anti-Reverse Ratchet
BNT3927	Ball Bearing	BNT5676	Brake Ring Gear	BNT6924	O Ring
BNT4124	Star Drag Spring	BNT5680	Washer	BNT6926	Worm Shaft
BNT4194	Ball Bearing	BNT5681	Spring	BNT6927	Level Wind Guard
BNT4343	Ball Bearing	BNT5714	Screw	BNT6928	Screw
BNT4588	Washer	BNT5715	Washer	BNT6931	Level Wind Guard Bushing
BNT4625	Drag Washer C	BNT5722	Handle Nut	BNT6932	O Ring
BNT4729	O Ring	BNT5756	Screw	BNT6933	Washer
BNT4814	Screw	BNT5768	Handle Knob	BNT6935	Handle Shank Assembly
BNT4817	Screw	BNT5780	Roller Clutch Bearing	BNT6944	Clutch Guard Assembly
BNT4819	Idle Gear	BNT5803	Spool Clutch Pin	BNT6945	Frame Assembly
BNT4874	Pawl Cap	BNT5932	Screw	BNT6946	Brake Case
BNT4893	Washer	BNT5942	Yoke Spring	BNT6947	Right Side Plate Assembly
BNT4911	Clutch Pawl Assembly	BNT5944	Screw	BNT6948	Star Drag
BNT4932	Click Spring	BNT5945	Clutch Cam Retainer	BNT6949	Star Drag Nut
BNT5218	O Ring	BNT5948	Screw	BNT6951	Drive Shaft
BNT5308	Washer	BNT5956	Stabilizer Bar	BNT6952	Level Wind Protector
BNT5310	Idle Gear Pin	BNT5971	O Ring	BNT6953	Clutch Bar Guide (B)
BNT5316	Click Pin	BNT5972	Brake Dial	BNT6954	Clutch Button
BNT5319	Bearing Retainer	BNT6102	Clutch Cam	BNT6955	Right Side Plate Cam Lever
BNT5320	O Ring	BNT6126	Handle Knob Seal	BNT6956	Left Side Plate
BNT5327	Idle Gear Spring	BNT6555	Washer	BNT6957	Yoke
BNT5328	Screw	BNT6655	Washer	BNT6961	Drag Washer B
BNT5329	Drive Shaft Retainer	BNT6686	Pinion Gear	BNT6962	Cast Control Cap
BNT5334	Bushing	BNT6688	Drive Gear	BNT6965	Handle Assembly
BNT5346	Bearing Spacer	BNT6701	Washer		
BNT5348	Screw	BNT6907	Line Guide Assembly		